

# Product Carbon Footprint (PCF) Canned Pineapples



## Did you know?

Our canned pineapples (A10 Can) emit



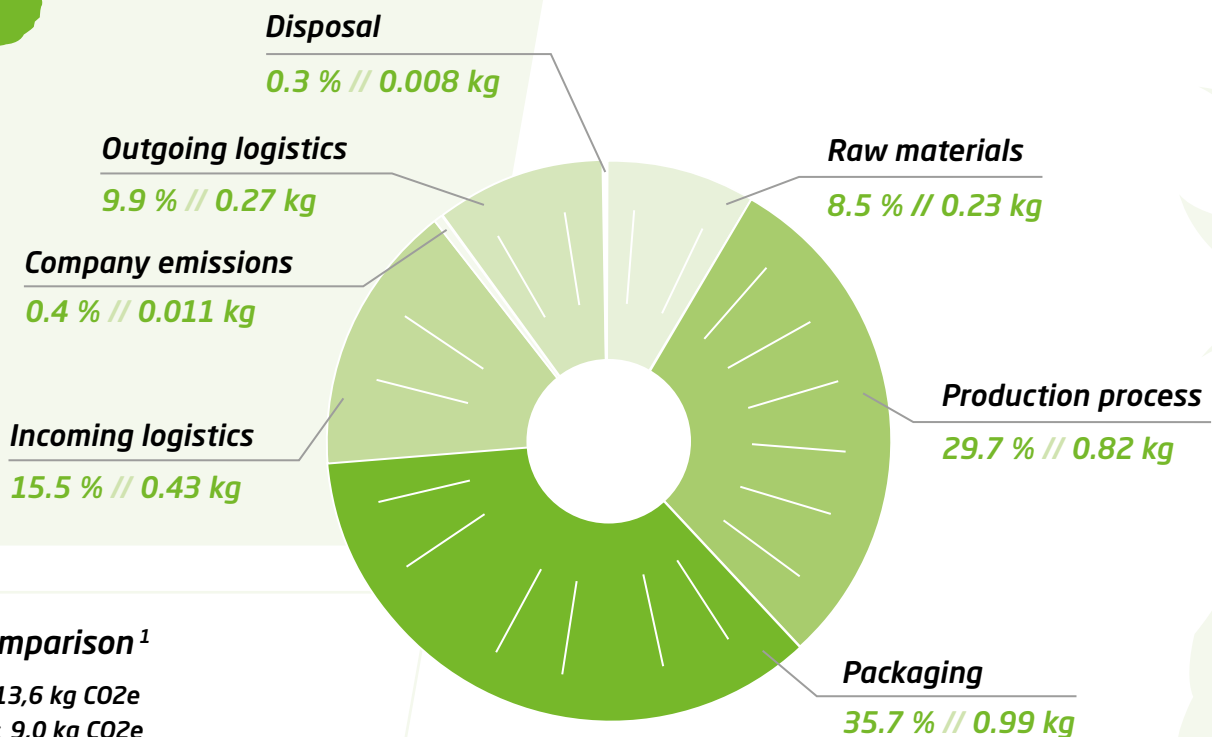
# 2,76 kg CO<sub>2</sub>e

per Kilogramme NDW

CO<sub>2</sub>e?

## Contact us - together we also calculate your product

As part of your supply chain, we invite you to join us in calculating the carbon footprint of your product from our assortment. We also offer support if you would like to offset the carbon emissions of your products.



## In Comparison<sup>1</sup>

Beef: 13,6 kg CO<sub>2</sub>e  
 Butter: 9,0 kg CO<sub>2</sub>e  
 Coffee, powder: 5,6 kg CO<sub>2</sub>e  
 Breadroll, white bread: 0,7 kg CO<sub>2</sub>e  
 Potatoes, fresh: 0,2 kg CO<sub>2</sub>e

**i** Our calculation follows the „cradle-to-customer plus waste“ approach.

## Demanded by our customers!

How important is it for you that we identify the carbon footprint of our products?

- 7.3 % very important
  - 46.3 % important
  - 34.1 % less important
  - 4.9 % unimportant
  - 7.3 % not assessable
- 87,7 %

In collaboration with



## Find out more.

**i** Read our project report for more detailed information on the carbon footprint of our canned pineapples, which we will gladly send you. Please contact us!

<sup>1</sup> G. Reinhardt et al. 2020, ifeu - Institut für Energie- und Umweltforschung Heidelberg, „Ökologische Fußabdrücke von Lebensmitteln und Gerichten in Deutschland“, P. 8-17.